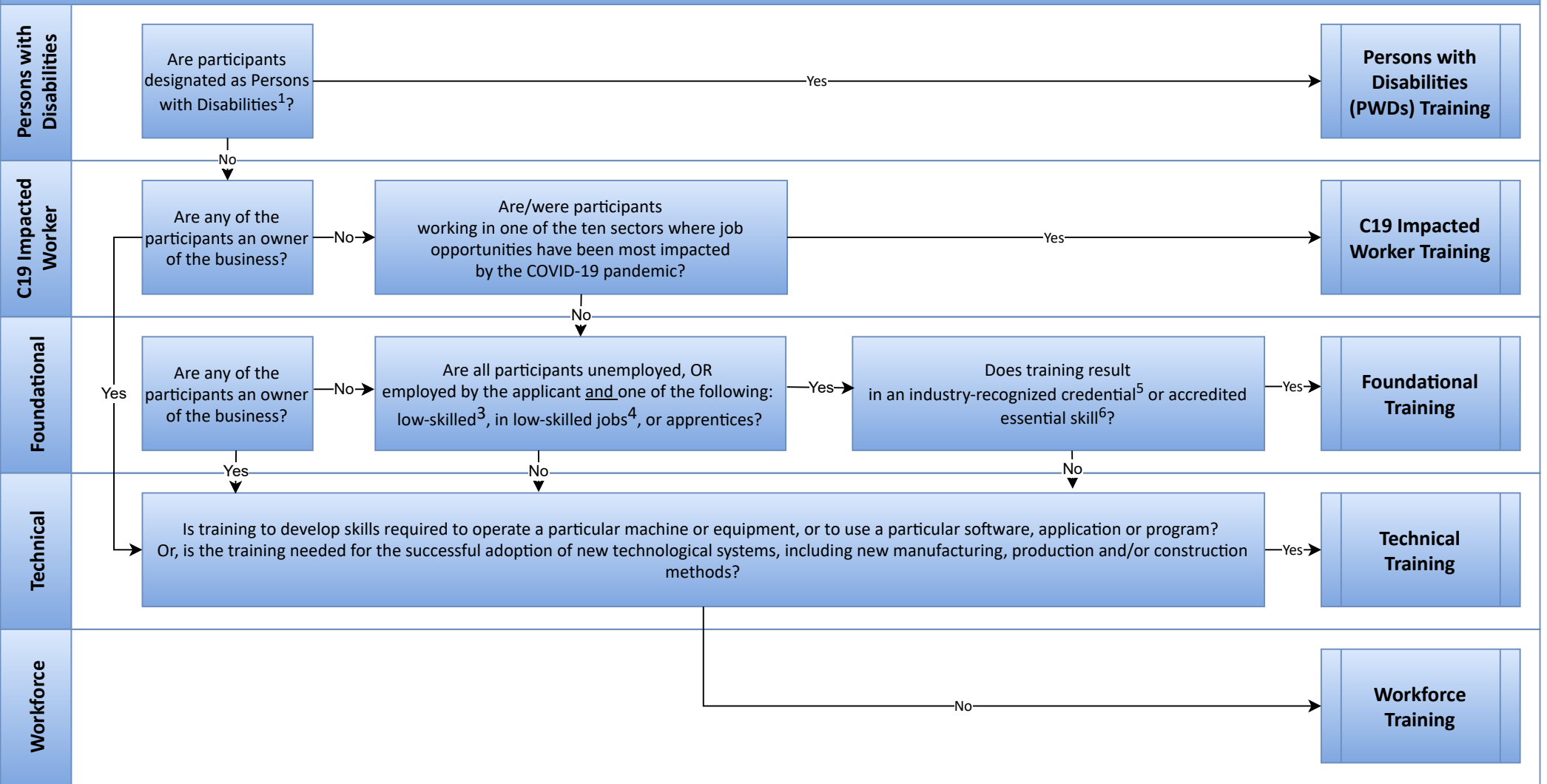


Choosing the Right Training Stream

This chart assists applicants with choosing the appropriate stream for their training type. The chart does not replace Employer Training Grant Eligibility Criteria and should not be taken as a guarantee of approval. All applications are assessed on a case-by-case basis. This chart does not cover all scenarios. If your training does not fit or you have questions, please contact us at ETG@gov.bc.ca.



Notes

- ¹Persons with Disabilities (PWD) designation is granted by the Ministry of Social Development and Poverty Reduction per the Employment and Assistance for Persons with Disabilities Act. To learn more, visit the [SDPR website](#).
- ²The 10 sectors where job opportunities have been most impacted by the COVID-19 pandemic include: Utilities; Construction; Wholesale and retail trade; Transportation and warehousing; Information and cultural services; Finance, insurance, real estate, rental and leasing; Management of companies and enterprises; Accommodation and food services; Other services (except public administration); Agriculture.
- ³Low-skilled employees are defined as having a high school diploma or less.
- ⁴Low skilled jobs are listed in [skill levels C or D](#) of the National Occupational Classification (NOC).
- ⁵Credentials that are transferable and recognized by employers across an industry. Examples include: health and safety training (e.g., WHMIS, first aid); hospitality training (e.g., Food Safe, Serving it Right); and computer or software training (e.g., Microsoft, Cisco).
- ⁶Accredited essential skills include but are not limited to reading, writing, numeracy, and basic computer skills. Essential skills training must be delivered by a BC public post-secondary institution or an institution certified by the Private Training Institutions Branch.